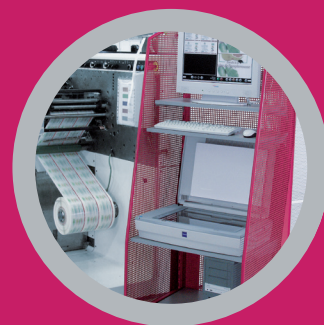
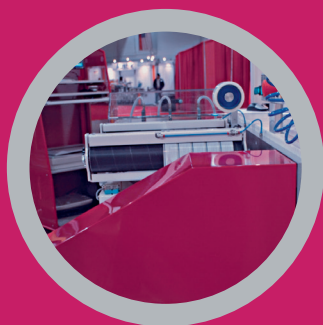


Your Vision for Quality.

EyeC ProofRunner



The company

EyeC is a leading vision technology company based in Hamburg, Germany. We are focused exclusively on high performance artwork and print inspection systems aimed to assure the highest quality standard throughout the design and printing process.

Our R&D and Customer Support staff consists of highly skilled and experienced engineers, graduated in either Electronic Engineering and/or Computer Technology with long experience in industrial inspection applications.

Our products are based on the latest pattern recognition technology and are designed to meet the needs of design houses, the printing industry, and their customers. They have been developed in close cooperation with actual

users, with a strong emphasis on speed, reliability, and ease of use. Our software is produced in conformance to applicable ISO 9001, GMP and GAMP 5 guidelines, and contains all functions necessary for validation according to the guidelines laid out in U.S. FDA Title 21 CFR Part 11.

EyeC systems are in use at numerous customers in the printing, pharma, cosmetic and other industries across the world, producing offset printed inserts, folding cartons and flexographic self-adhesive labels for food, cosmetic, medical and pharmaceutical applications.



The EyeC History

- 2003** EyeC Profiler 400 for off-line inspection
- 2004** EyeC Profiler 600 for labels and
EyeC Profiler 1000 for cartons
- 2005** EyeC Profiler Braille, EyeC Profiler 700 for
patient information leaflets, barcode inspection
- 2006** EyeC ProofRunner for in-line inspection
- 2007** Cigarette warning text control tool and color
distance tool
- 2008** RSS and Data Matrix Code Inspection,
EyeC ProofRoller for cylindrical objects
- 2009** EyeC ProofRunner Carton, EyeC ProofRunner
Folder Gluer and EyeC ProofRunner Variable Data
- 2010** EyeC Profiler Graphic Multiuser
- 2012** In-line inspection of sheet for offset machines,
In-line color control
- 2013** EyeC Profiler Content for the inspection of
texts, graphics and layout
- 2014** EyeC ProofRunner Carton Retrofit
- 2015** Braille inspection for A2 scanners,
EyeC ProofRunner Sheetfed as retrofit module
- 2016** EyeC ProofRunner Carton Pre-Feeder
- 2017** EyeC Workflow Integration & EyeC Quality Link
- 2022** EyeC ProofRunner HighLight Series &
Profiler RS
- 2024** EyeC Profiler 1200 DT &
AI-based Defect Classification

EyeC ProofRunner

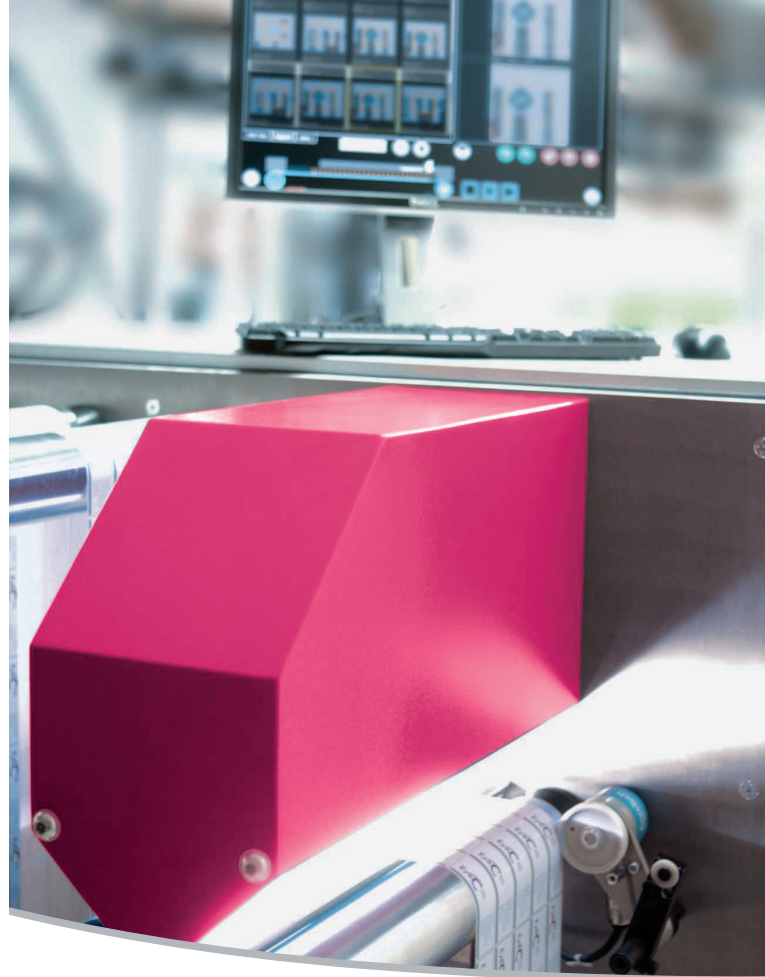
100% verification - print and content

Finally there is an easy way to check all your prints against your customer proof! With an EyeC ProofRunner you get automatic 100% inspection of all items across the web, content verification against your customer proof as well as the best mix-up prevention you can imagine - right on the press or on a rewinder. The process is simple and yields accurate results; so you can rest assured that you will print exactly what your customer expects. Inspection results are instantly available and can be used for immediate corrective action. This gives you the means to completely control and monitor your printing process and to avoid scrap. In short: 100% inspected, 100% content verified and 100% compared to the customer proof!

Easy to use

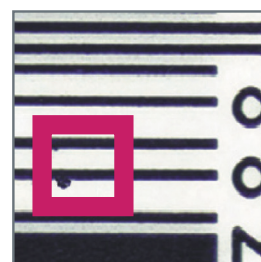
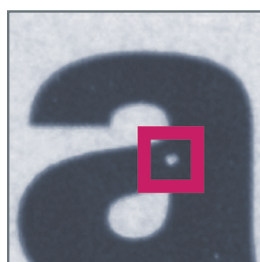
The EyeC ProofRunner has been designed with ease of use in mind. Any print machine operator can perform a meaningful in-line inspection within minutes.

- **The customer proof is loaded automatically based on the entered job data.**
- **All items across the web are automatically identified.**
- **Irrelevant areas are automatically disregarded**
- **Significant deviations are brought to the operator's attention.**
- **A full job report is instantly available.**



Smart

The EyeC ProofRunner uses a compact, high speed line scan camera to continuously acquire a high resolution image of the entire web. A high performance computer system then identifies all printed items on the web and tracks them through the entire print- or converting run. The same computer also performs an intelligent comparison of each printed item against the customer proof. The advanced pattern analysis of the EyeC ProofRunner is capable of distinguishing between the different types of defects, so every significant deviation will get caught and displayed while permissible fluctuations caused by the printing process itself - like minor registration errors or small squeeze marks around individual letters - can be automatically passed. The intelligent design allows for the inspection of hot- or coldstamping elements.



Examples of flaws

Reliable

The EyeC ProofRunner finds all typical defects such as: **missing parts of letters, filled in letters, hickies, smudges, missing ink, spots, color deviations, defects in hot- or cold stamping elements.**

Through the pre-press link to the signed customer proof even content errors resulting from mistakes in the pre-print area can be detected like: **typos, reversed colors in graphical elements, wrong font or font attributes, incorrect character spacing, missing special characters or accents.**

Flexible

The use of different parameter sets allows the EyeC ProofRunner's sensitivity to be adapted to product or customer specific quality standards.

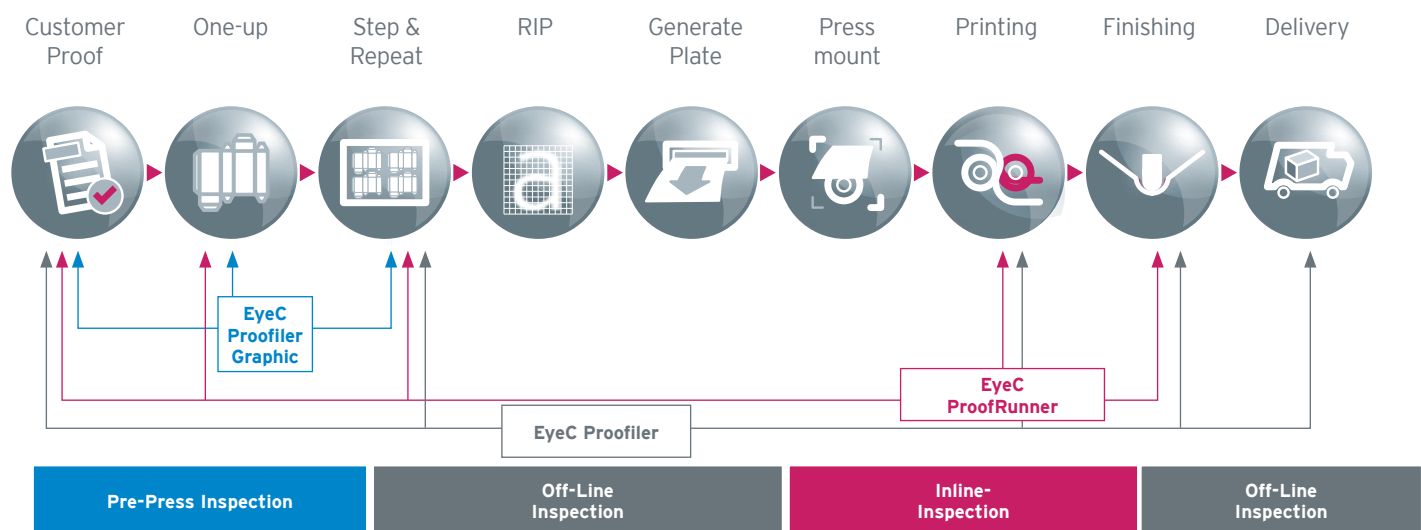
Comprehensive

The EyeC ProofRunner gives you the advantage that you can be sure to print and deliver exactly what your customer expects.

Key Features

- ✔ **100% job inspection**
Ensures quality and keeps customers satisfied.
- ✔ **High and low priority regions**
Meets quality requirements while limiting waste.
- ✔ **Hot and cold stamping / reflecting surface inspection**
Addresses the different market needs.
- ✔ **Predefined parameter sets to select tolerance**
Adapt the inspection sensitivity to each job with one click.
- ✔ **Running total of good and defective items**
Prevents underdeliveries.
- ✔ **Comprehensive inspection report**
Keeps track of inspection results and certifies quality.

The Design and Printing Process



Technical specifications*

	System	EyeC ProofRunner		
	Version	Web	Carton Folder Gluer	Web / Carton HighLight
Available Cameras	Standard	4k color	4k color	4k color
	Optional	4k monochrome 8k monochrome	4k monochrome 8k monochrome	4k monochrome 8k monochrome
Available Inspection Widths	Standard	450 mm (17.71")	420 mm (16.53")	450 mm (17.71")
	Optional	550 mm (21.65") 760 mm (29.92")	550 mm (21.65") 660 mm (25.98") 760 mm (29.92")	600 mm (23.622") 800 mm (31.496")
Example	Inspection width	450 mm (17.71")	420 mm (16.53")	450 mm (17.71")
	Camera	4k color	4k color	8k color
	Resolution	231 dpi	244 dpi	462 dpi
	Smallest detectable defect**	0.22 mm (0.009")	0.21 mm (0.008")	0.11 mm (0.004")
	Max. speed	420 m/min (1,378 ft/min)	400 m/min (1,312 ft/min)	300 m/min (984 ft/min)
Features & Options	Checks against customer proof	optional	standard	standard
	Automatic definition of priority regions	optional	optional	optional
	EyeC Quality Link	optional	not available	optional (ProofRunner Web)
	Color monitoring	optional	optional	optional
	1D and 2D code reading	optional	optional	optional
	Variable code tracking	optional	optional	optional
	Variable data inspection	optional	optional	optional
	Additional live web view	optional	optional	optional
	Defects heatmap	optional	optional	optional
	Health warning inspection	not available	not available	optional
Distance measurement	optional	optional	optional	

* These technical specifications are based on standard assumptions. All values provided are to our best knowledge at the time this sheet has been created and subject to change without further notice.

** At a difference of at least 50 gray scale levels.

The EyeC ProofRunner

- is objective and easy to use
- performs 100% job inspection
- asserts consistency between all printed objects that are printed simultaneously
- gives you 100% mix-up prevention
- provides content verification, in any language and any alphabet
- gives 100% assurance that the print is identical to the signed off customer proof
- is fully validatable

**HEADQUARTERS / GERMANY, AUSTRIA,
SWITZERLAND**

EyeC GmbH
Phone: +49 40 226 3555 0

E-mail: Sales@EyeC.com
www.EyeC.com

AUSTRALIA, SOUTH-EAST ASIA

GMS Pacific Pty. Ltd.
Phone: +61 3 9535 9777
E-mail: Info.AU@EyeC.com
www.GMSPacific.com

BELARUS

Paritet System, LLC
Phone: +375 17 374 75 00
E-mail: Info.BY@EyeC.com
www.EyeC.com

BENELUX, DENMARK, SWEDEN

EyeC Benelux
Phone: +31 74 2502 533
E-mail: Info.NL@EyeC.com
www.EyeC.com

BRAZIL

MZ Máquinas Ltda.
Phone: +55 11 2374 1335
E-mail: Info.BR@EyeC.com
www.EyeC.com

CENTRAL AND SOUTH AMERICA

EyeC America, LLC
Phone: +1 480 703 9538
E-mail: Info.AR@EyeC.com
www.EyeC.com

CHILE

Walbaum Representaciones Ltda.
Phone: +562 2351020
E-mail: Info.CL@EyeC.com
www.WalbaumChile.cl

CHINA

EyeC China
Phone: +86 512 66678201 ext. 802
E-mail: Info.CN@EyeC.com
www.EyeC.com

FRANCE, MONACO

PerFormance GrapHique
Phone: +33 6 303 841 32
E-mail: Info.FR@EyeC.com
www.EyeC.com

FRANCE

E+L France SARL
Phone: +33 389 329292
E-mail: Info.FR@EyeC.com
www.Erhardt-Leimer.fr

GREECE

Graphic Systems
Phone: +30 210 9221039
E-mail: Info.GR@EyeC.com
www.EyeC.com

HUNGARY

EN'CO Bt
Phone: +36 70 612 7339
E-mail: Info.HU@EyeC.com
www.EyeC.com

INDIA

E+L India
Phone: +91 2717 610400
E-mail: Info.IN@EyeC.com
www.Erhardt-Leimer.in

ISRAEL

ProArt Technology Ltd.
Phone: +972 544 587889
E-mail: Info.IL@EyeC.com
www.ProArt.co.il

ITALY

Endeavour S.r.l.
Phone: +39 055 603447
E-mail: Info.IT@EyeC.com
www.EyeC.com

JAPAN

Cross-link Pacific, Inc.
Phone: +81 3 5919 2120
E-mail: Info.JP@EyeC.com
www.EyeC.com

LITHUANIA, ESTONIA, LATVIA

Nuera UAB
Phone: +370 698 03 901
E-mail: Info.LT@EyeC.com
www.EyeC.com

MEXICO

EyeC México
Phone: +52 33 1814 0774
E-mail: Info.MX@EyeC.com
www.EyeC.com

POLAND, CZECH REPUBLIC, SLOVAKIA

EyeC Polska z.o.o
Phone: +49 40 226 3555 0
E-mail: Info.PL@EyeC.com
www.EyeC.com

ROMANIA

Filkon International srl
Phone: +40 745 086 106
E-mail: Info.RO@EyeC.com
www.Filkon.ro

**SERBIA, BOSNIA, BULGARIA, CROATIA,
KOSOVO, MACEDONIA, MONTENEGRO,
SLOVENIA**

Printbox
Phone: +381 633 02104
E-mail: Info.RS@EyeC.com
www.Printbox.rs

SPAIN, PORTUGAL

Sercoyse, S.L.
Phone: +34 93 2610486
E-mail: Info.ES@EyeC.com
www.Sercoyse.com

TAIWAN

EyeC Taiwan
Phone: +886 2 2660 2495
E-mail: Info.TW@EyeC.com
www.EyeC.com

TURKEY

Imaj Otomasyon Sanayi Ticaret Ltd. Sti.
Phone: +90 212 220 4116
E-mail: Info.TR@EyeC.com
www.ImajOtomasyon.com

UNITED ARAB EMIRATES

Fotedar Engineering Services
Phone: +97 1509414078
E-mail: Info.AE@EyeC.com
www.FotedarEngineering.com

UNITED KINGDOM, IRELAND

EyeC UK Limited
Phone: +44 118 983 3347
E-mail: Info.GB@EyeC.com
www.EyeC.com

URUGUAY, PARAGUAY

Steel Servicios y Afiliados Industriales S.R.L.
Phone: + 598 2204 1335
E-mail: Info.UY@EyeC.com
www.EyeC.com

USA, CANADA

EyeC America, LLC
Phone: +1 330 644 6841
E-mail: Info.US@EyeC.com
www.EyeC.com